



RENASANT  
CONVENTION CENTER

MEMPHIS



RENASANT

CONVENTION CENTER

# Memphis

HOME OF BLUES,  
SOUL & ROCK 'N' ROLL

## TAKE ME TO THE RIVER

Where the mighty Mississippi River flows and storied streets rock, an experience awaits you called Memphis. It can't be duplicated, the feeling you get in this realm of music icons, in a city that can feed your soul with its Southern hospitality and inspire you with its creative energy. It's something you just have to see, hear, feel for yourself.

*So bring your group to the river—bring them to Memphis.*

# MORE REASONS THAN EVER TO



MEET IN  
*Memphis*



## HOME OF BLUES, SOUL & ROCK 'N' ROLL

WITH LEGENDARY MUSIC ATTRACTIONS & LIVE  
SHOWS TO PROVE IT

## MORE HOTELS

4K+ HOTEL ROOMS DOWNTOWN | 2500+ MORE IN  
DEVELOPMENT  
19K HOTEL ROOMS CITYWIDE

## ONE-STOP SERVICE

OUR TEAM WILL HELP YOU CREATE THE PERFECT  
EXPERIENCE FOR YOUR DELEGATES

## ACCESSIBILITY

SIX TO EIGHT-HOUR DRIVE  
FROM 85% OF THE COUNTRY

#1 REASON  
TO COME TO MEMPHIS

YOUR DELEGATES  
WILL LOVE IT...  
AND LOVE  
YOU!

## BEALE STREET + FIVE MORE ENTERTAINMENT DISTRICTS

PACKED WITH WALKABLE ENTERTAINMENT, DINING  
& ATTRACTION OPTIONS

## ACCLAIMED CULINARY SCENE

LEGENDARY BBQ, SOUL FOOD, FINE DINING,  
CRAFT BREWERIES & SPIRITS

## YOUR DOLLAR GOES FURTHER

NAMED ONE OF THE 17 BEST AFFORDABLE  
DESTINATIONS BY US NEWS & WORLD REPORT

## UNFORGETTABLE TEAM-BUILDING

AT UNIQUE OFFSITE EVENT SPACES

including Graceland, The National Civil Rights Museum, Shelby  
Farms Park, Memphis Zoo & more

NAMED ONE OF WORLD'S GREATEST  
PLACES BY TIME MAGAZINE

# MEMPHIS HAS ALWAYS BEEN AN ORIGINAL NOW IT HAS A MEETING SPACE TO MATCH

*Give your group the Memphis experience ⚡ Start at the Renasant Convention Center*

Its \$200M renovation - including a grand new entrance, high-end finishes and inviting new spaces that bring in natural light and river views - provides a state-of-the-art facility in a one-of-a-kind location.

**300,000**

GSF OF MEETING, EXHIBIT &  
PRE-FUNCTION SPACE

**118,000**

GSF, COLUMN FREE  
EXHIBIT HALL

**28,000**

GSF  
BALLROOM

**2,100**

SEAT CANNON CENTER FOR  
THE PERFORMING ARTS

**46**

FLEXIBLE MEETING ROOMS  
(90,000 GSF)

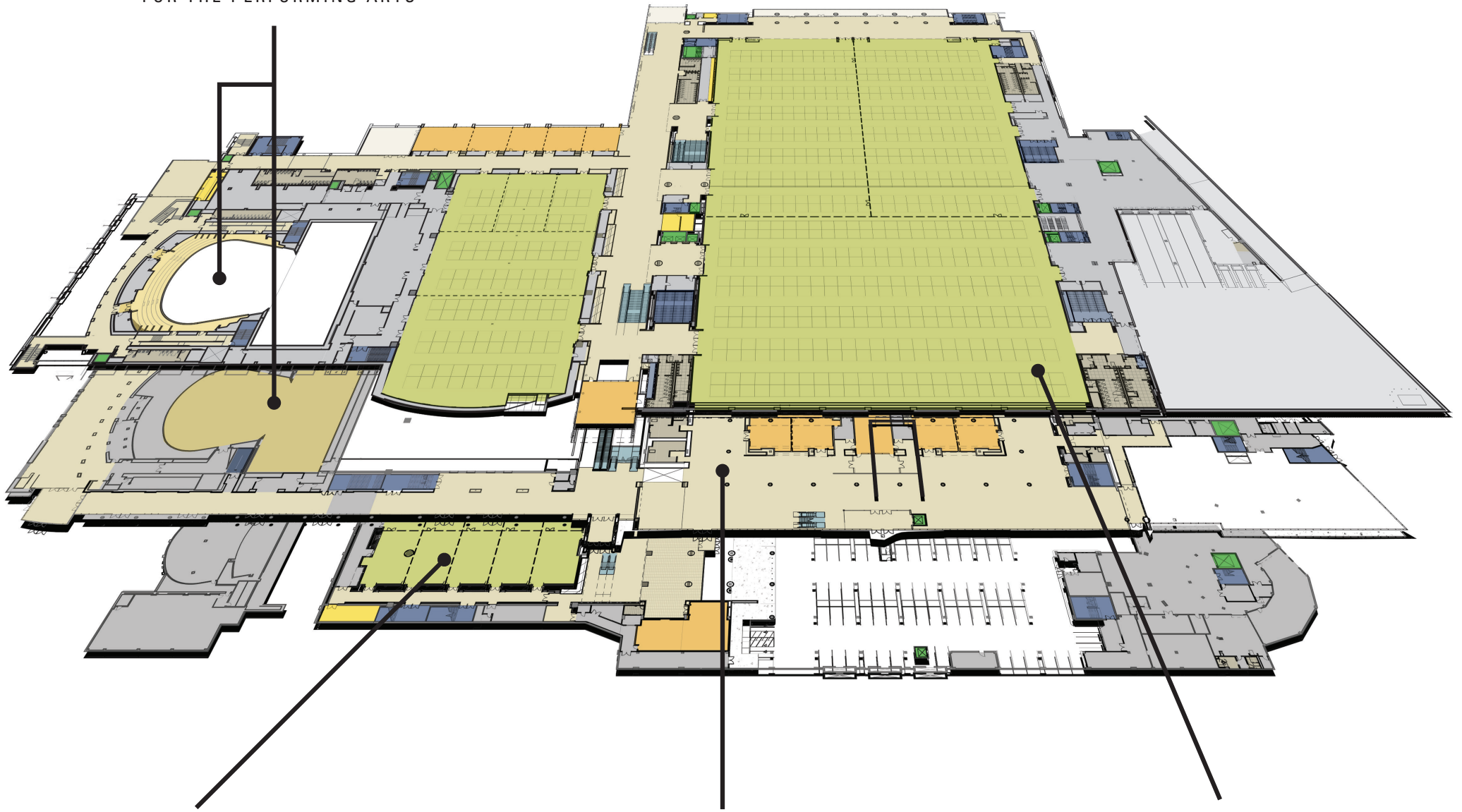
**600**

ROOMS AT THE SHERATON  
MEMPHIS DOWNTOWN

**OPENED ⚡ SPRING 2021**

# CANNON CENTER

FOR THE PERFORMING ARTS



## LOWER LEVEL

FLEX HALL/MEETING ROOMS

## LEVEL 1

MAIN STREET LOBBY/MEETING ROOMS

## LEVEL 2

EXHIBIT HALL/BALLROOM



# LEVEL 2

SPECIFICATIONS



The 118,000 GSF, column-free Exhibit Hall can be used as an impressive Exhibit Hall or split into three smaller halls. This level also offers a 28,000 GSF Grand Ballroom which can be divided into five smaller sections if needed. Five meeting rooms offer 16-foot ceilings and natural light that complement the overall space. A spacious foyer located outside the Exhibit Hall and Grand Ballroom is perfect for registration. This level's views will really grab your attention. The Memphis Board Room, a three-sided glass space, cantilevers over Main Street for downtown views, while an outdoor terrace overlooking the Mississippi River provides a relaxing place for breaks.

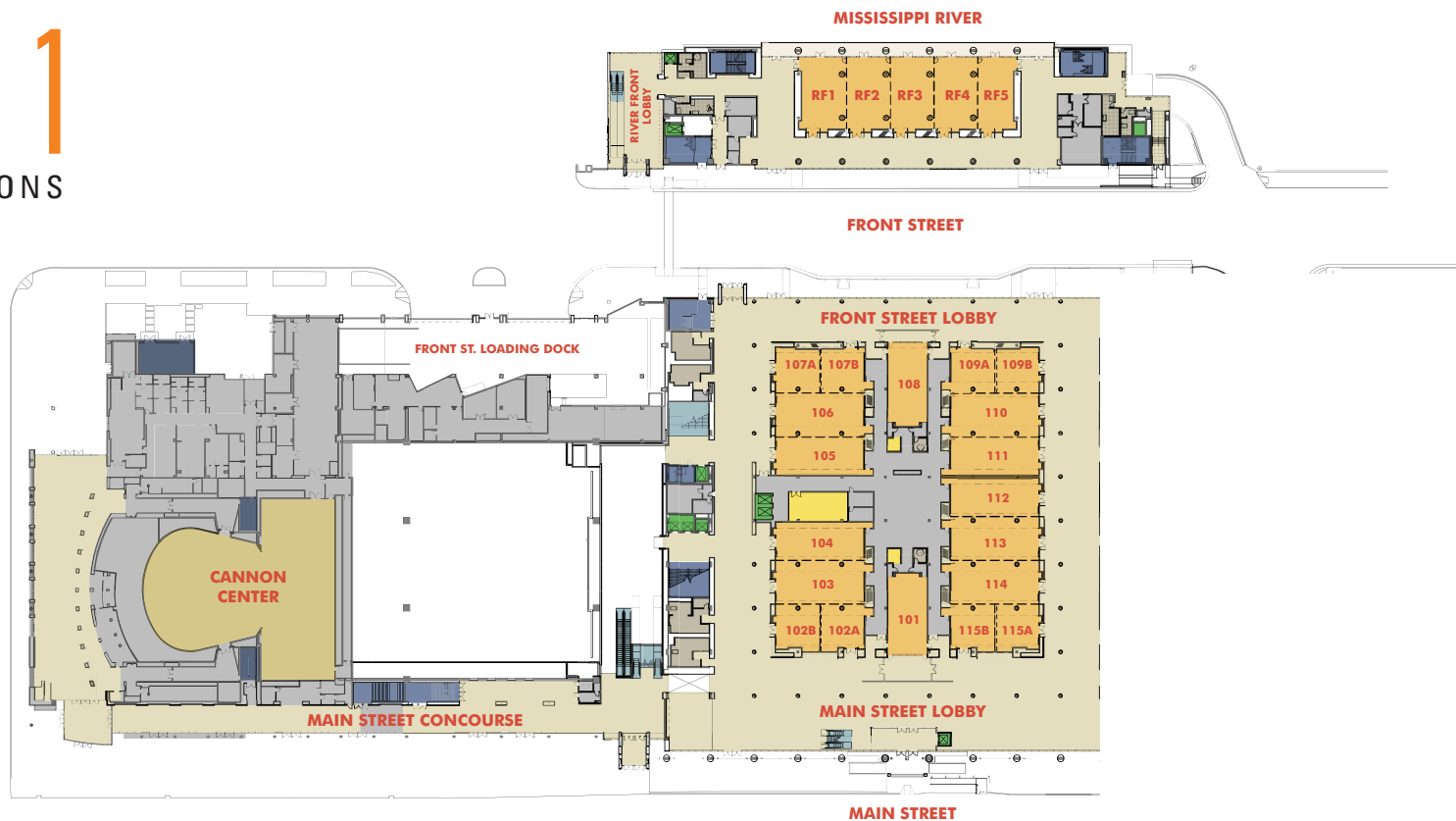
ROOMS/HALLS	SQ. FEET	DIMENSIONS W x D	BANQUET STYLE	THEATRE STYLE	TRAINING/ CLASSROOM	10'X10' BOOTHS	BOARDROOM STYLE	CEILING HEIGHT
East Hall	47,965	181' x 265'	3,150	4,480	3,312	264	—	40'
Northwest Hall	33,528	254' x 132'	2,100	2,916	2,160	150	—	40'
Southwest Hall	33,528	254' x 132'	2,100	2,916	2,160	150	—	40'
NW/SW Hall	67,310	254' x 265'	4,200	5,616	4,320	330	—	40'
Main Hall (Combined)	117,660	444' x 265'	7,000	10,670	7,740	570	—	40'
Riverview Lobby	8,536	194' x 44'	—	—	—	—	—	40'
Memphis Boardroom	1,147	37' x 31'	60	81	42	—	32	—

ROOMS/HALLS	SQ. FEET	DIMENSIONS W x D	BANQUET STYLE	THEATRE STYLE	TRAINING/ CLASSROOM	10'X10' BOOTHS	BOARDROOM STYLE	CEILING HEIGHT
Ballroom A	10,492	86' x 122'	700	1,050	768	50	—	27'
Ballroom B	8,296	68' x 122'	500	840	528	40	—	27'
Ballroom C	2,829	41' x 69'	150	240	168	10	56	27'
Ballroom D	2,829	41' x 69'	150	240	168	10	56	27'
Ballroom E	2,829	41' x 69'	150	240	168	10	56	27'
Grand Ballroom (Combined)	27,328	224' x 122'	1,900	2,548	1,680	144	—	27'
201	1,056	32' x 33'	40	84	60	—	24	16'
202	1,056	32' x 33'	40	84	60	—	24	16'
203	1,056	32' x 33'	40	84	60	—	24	16'
204	1,056	32' x 33'	40	84	60	—	24	16'
205	1,440	32' x 45'	60	112	92	—	32	16'
201 – 205 (Combined)	5,632	32' x 176'	280	448	312	24	—	16'



# LEVEL 1

SPECIFICATIONS





24 flexible meeting rooms and the spacious Main Street Lobby provide ample breakout and registration space. The Main Street Lobby and Concourse are just a few steps from our vintage trolley line and directly across from the Sheraton Memphis Downtown. This level has easy Main Street access to the 2,100 seat Cannon Center for the Performing Arts to accommodate special events and plenary sessions.

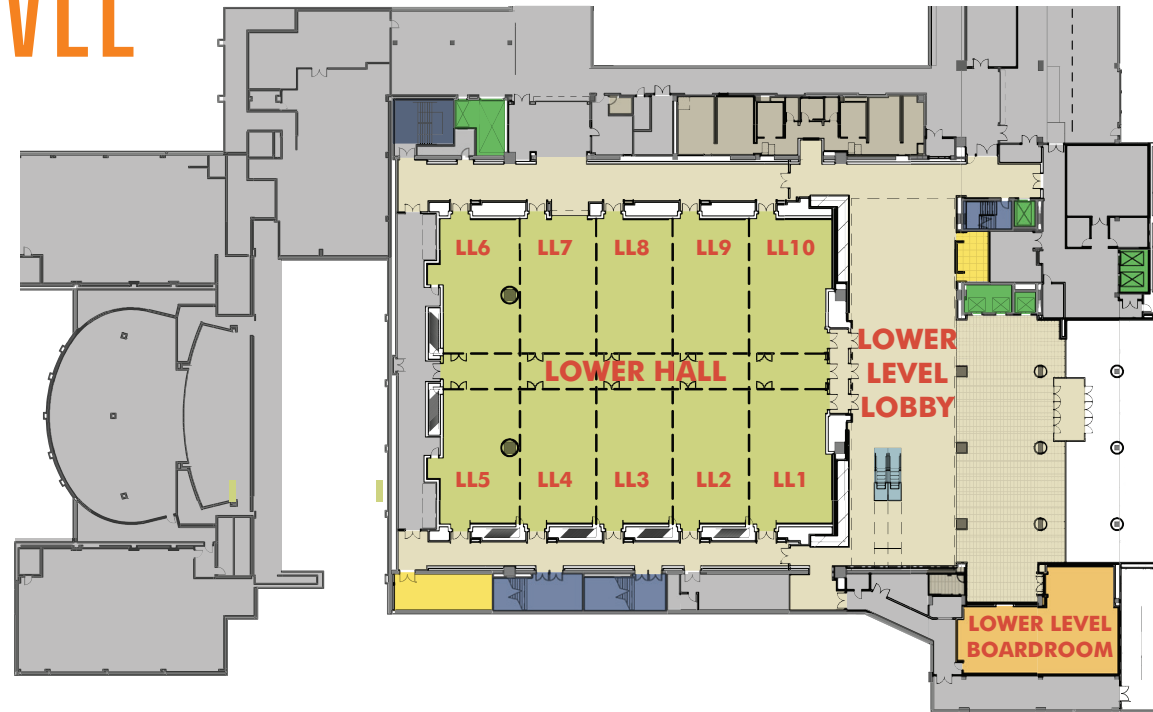
ROOMS/HALLS	SQ. FEET	DIMENSIONS WxD	BANQUET STYLE	THEATRE STYLE	TRAINING/ CLASSROOM	10'X10' BOOTHS	BOARD-ROOM STYLE	CEILING HEIGHT
101	1,674	27'×62'	80	168	88	8	40	20'
102A	930	31'×30'	40	60	40	3	24	20'
102B	930	31'×30'	40	60	40	3	24	20'
103	1,800	30'×60'	100	168	96	8	48	20'
104	1,560	26'×60'	100	168	96	6	48	20'
102-104 (Combined)	5,460	91'×60'	300	400	256	16	—	20'
105	1,500	25'×60'	100	168	96	6	48	20'
106	1,860	31'×60'	100	168	96	8	48	20'
107A	930	31'×30'	40	60	40	3	24	20'
107B	930	31'×30'	40	60	40	3	24	20'
105-107 (Combined)	5,220	87'×60'	300	400	256	16	—	20'
108	1,674	27'×62'	80	168	88	6	40	20'
109A	930	31'×30'	40	60	40	3	24	20'
109B	930	31'×30'	40	60	40	3	24	20'
110	1,800	30'×60'	100	168	96	8	48	20'
111	1,560	36'×60'	100	168	96	6	48	20'
109-111 (Combined)	5,220	97'×60'	300	400	256	16	—	20'

ROOMS/HALLS	SQ. FEET	DIMENSIONS WxD	BANQUET STYLE	THEATRE STYLE	TRAINING/ CLASSROOM	10'X10' BOOTHS	BOARD-ROOM STYLE	CEILING HEIGHT
112	1,560	26'×60'	100	168	96	6	48	20'
113	1,800	30'×60'	100	168	96	8	48	20'
114	1,800	30'×60'	100	168	96	8	48	20'
115A	930	31'×30'	40	60	40	3	24	20'
115B	930	31'×30'	40	60	40	3	24	20'
112–115 (Combined)	7,020	117'×60'	400	546	328	21	—	20'
River Front 1	1,519	31'×49'	80	110	64	6	32	20'
River Front 2	1,470	30'×49'	80	110	64	6	32	20'
River Front 3	1,470	30'×49'	80	110	64	6	32	20'
River Front 4	1,470	30'×49'	80	110	64	6	32	20'
River Front 5	1,274	26'×49'	80	110	64	6	32	20'
RF1 - RF5 (Combined)	7,203	147'×49'	370	434	300	26	—	20'
Main Street Lobby	18,090	67'×270'	—	—	—	—	—	20'
Front Street Lobby	8,100	30'×270'	—	—	—	—	—	20'
River Front Lobby	2,100	70'×30'	—	—	—	—	—	20'



# LOWER LEVEL

SPECIFICATIONS



The Lower Level with direct access to covered parking, provides for an impressive entry to the venue. The 18,000 GSF Flex Hall, which can be divided into 10 sizeable breakout rooms, is ideal for shows and exhibits as well as meetings and banquets. A large pre-function lobby and spacious Lower Level Boardroom add to the flexibility of the Lower Level.

ROOMS/HALLS	SQ. FEET	DIMENSIONS W×D	BANQUET STYLE	THEATRE STYLE	TRAINING/ CLASSROOM	10'X10' BOOTHS	BOARDROOM STYLE	CEILING HEIGHT
LL1	1,680	32'×52.5'	80	208	108	8	48	25'-6"
LL2	1,575	30'×52.5'	80	182	108	9	48	25'-6"
LL3	1,575	30'×52.5'	80	182	108	9	48	25'-6"
LL4	1,575	30'×52.5'	80	182	108	9	48	25'-6"
LL5	1,575	30'×52.5'	80	126	72	7	48	25'-6"
LL6	1,575	30'×52.5'	80	126	72	7	48	25'-6"
LL7	1,575	30'×52.5'	80	182	108	9	48	25'-6"
LL8	1,575	30'×52.5'	80	182	108	9	48	25'-6"
LL9	1,575	30'×52.5'	80	182	108	9	48	25'-6"
LL10	1,660	32'×52.5'	80	208	108	8	48	25'-6"
LL1 - 10 (Combined)	18,088	119'×152'	1,180	1,560	1,104	88	136	25'-6"
LOWER LEVEL BOARDROOM	1,880	—	—	—	—	—	—	12'-6"
LOWER LEVEL LOBBY	4,346	106'×41'	—	—	—	—	—	32'-7.5"

# CANNON CENTER FOR THE PERFORMING ARTS

## SPECIFICATIONS

2,100 Seats

Proscenium Opening: **40' x 55'**

Stage Depth — rear wall: **50'4"**

### PLASTER LINE AT CENTER STAGE TO:

- Spot booth: **122'**
- Mix position: **75"**
- Balcony wall: **204'**

### LOADING DOCK:

- Located at rear of theater on Front Street
- 2 bays — 100' x 30'
- 2 sets of loading doors — 10' W x 16' H each
- Straight push to stage 105'

### ORCHESTRA PIT:

- Downstage — 10'9" from center
- Upstage — 14'2" from center
- Both — 25'1" from center

### DRESSING ROOMS

- 15 dressing rooms
- All dressing rooms have restrooms with showers, make-up counters (except musician changing rooms), Broadway lights, program and paging.



Creation Studios



Jack Kenner



**CANNON CENTER**  
FOR THE PERFORMING ARTS

# ON-SITE VENDORS & SERVICES

Memphis' Renasant Convention Center provides information technology, electric, audiovisual and food & beverage services on-site through our exclusive providers.



Whether you need to broadcast your message to thousands of people or host private conferences for small teams, Prestige is here to deliver secure, turnkey AV and streaming services. Our highly trained event and creative services professionals will make certain your next event will be a success.



the rk group

The RK Group is the exclusive food and beverage provider for the Renasant Convention Center delivering culinary and service excellence to all attendees. From creative, chef-driven, and customizable selections to innovative presentations and attention to detail, every menu spotlights local and sustainably sourced products that showcase the heart and soul of Memphis regional flavors.

## IT SERVICES

The Renasant Convention Center Team provides on-site IT and electrical services including Internet connectivity, telecommunications and access to electrical equipment to power your presence at our venue.



Bass Pro Shops